

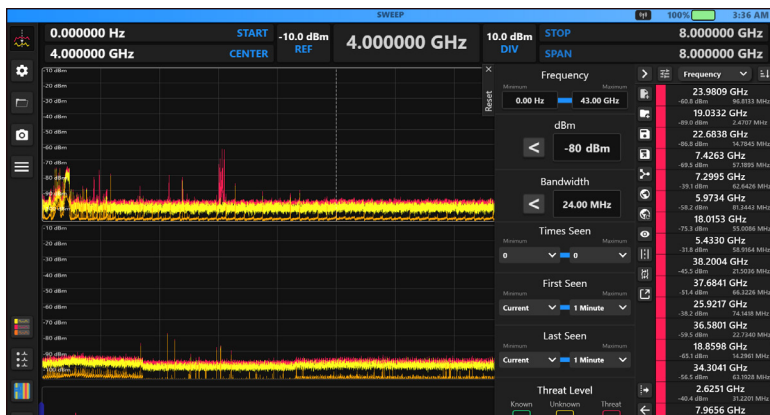
OSCOR[®]

<MAX>

PORTABLE SPECTRUM ANALYZER

Detect and Locate Electronic Transmitters up to 43GHz.

- Fully integrated auto-switching antenna panel, continuously sweeps/ displays 10 kHz - 43 GHz
- WiFi device detection
- Bluetooth device detection
- SmartBars™
- Discrete Bands
- I&Q Data Recording
- Multi- Purpose Probe (Carrier-Current, IR, Visible Light, Ultrasonic, Coax)



Spectrum view with Signal List

Features

- 1100 GHz/sec at 10 kHz resolution
- 125 MHz IBW
- Weighs 10.4 lbs./4.7 kg
- Dual hot-swappable Li-ion batteries
- 13" Hi-res capacitive touchscreen

Product specifications and descriptions subject to change without notice. Packaging may vary depending on model purchased.

+1 (931) 537-6032 | SALES@REIUSA.NET | REIUSA.NET



PRODUCT SPECIFICATIONS

RF SYSTEM

Frequency: 10 kHz to 43 GHz
 Sweep speed: 1100 GHz/sec (estimated)
 IBW: 125 MHz
 Preamp: 10 kHz-8 GHz: 15 dB
 Attenuation: 0 dB, -10 dB, -20 dB, -30 dB
 Dynamic Range: 90 dB

ANTENNA SYSTEM

Built-in auto switching antenna system (10 kHz – 43 GHz) capable of performing 125 antenna switches per second.

RF IN / IF OUT

Aux RF Inputs:

- 2.4 mm connector
- 2.92 mm Input [SMA compatible]

 IF Output:

- SMA [375 MHz with 125 MHz BW]

AUDIO

Demodulation types: AM, FM
 Built-in speakers
 Headphone output
 Audio input

I/Q Recording

OSCOR Max can record and store I/Q data

USER INTERFACE

13.3" Capacitive touchscreen display
 Gigabit Ethernet port

STORAGE

2TB M.2 NVMe SSD
 Micro SD Card Slot
 USB 3 Type A Port

POWER SOURCES

Universal Supply: 100–240 VAC,
 Removable Batteries: 2x Rechargeable Lithium ION
 USB-C PD Charging
 Runtime: 2.5 hours minimum

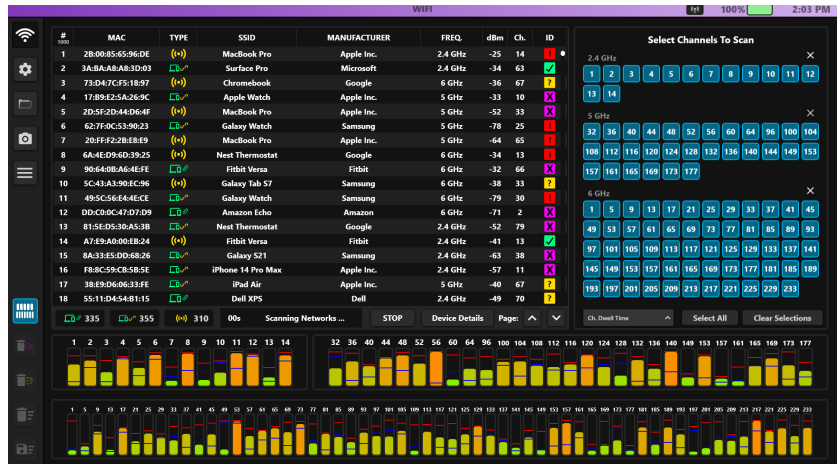
ACCESSORIES

Multi-Purpose Probe (MPP)

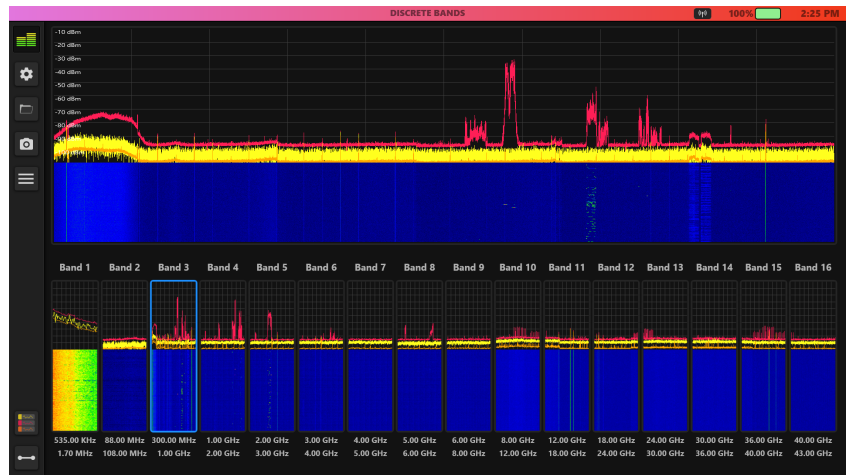
- IR
- Visible Light
- Ultrasonic
- Carrier Current
- Coax
- Magnetic Leakage

MECHANICAL

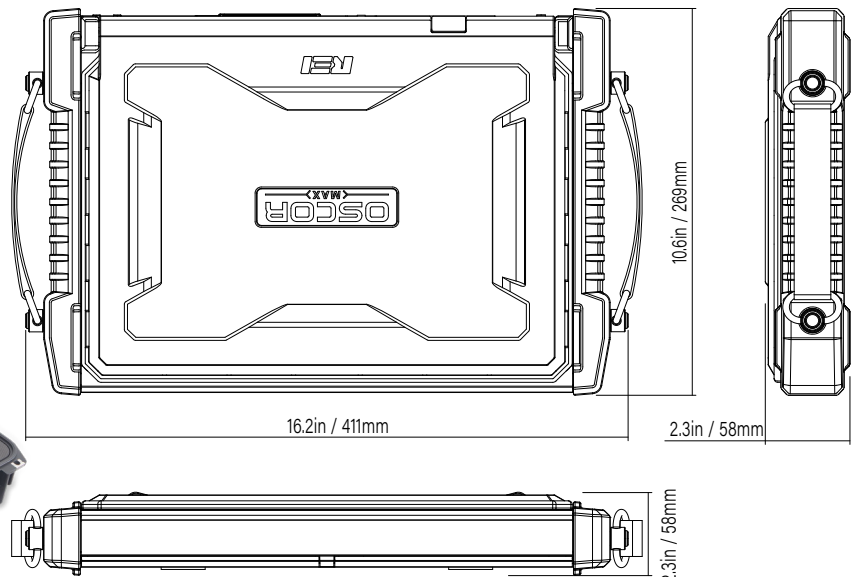
Dimensions:
 Length: 16.2 in/411 mm
 Width: 10.6 in/269 mm
 Depth: 2.3 in /58 mm
 Unit Weight w/batteries
 (2): 10.4 lbs/4.7 kg



WiFi and Bluetooth analysis.



Create multiple custom bands in Discrete Bands mode.



RESEARCH ELECTRONICS INTERNATIONAL
 455 SECURITY DRIVE, COOKEVILLE, TN 38506 USA
 TEL +1 931.537.6032 • 800.824.3190 (US ONLY) • FAX +1 931.537.6089
 sales@reiusa.net • www.reiusa.net